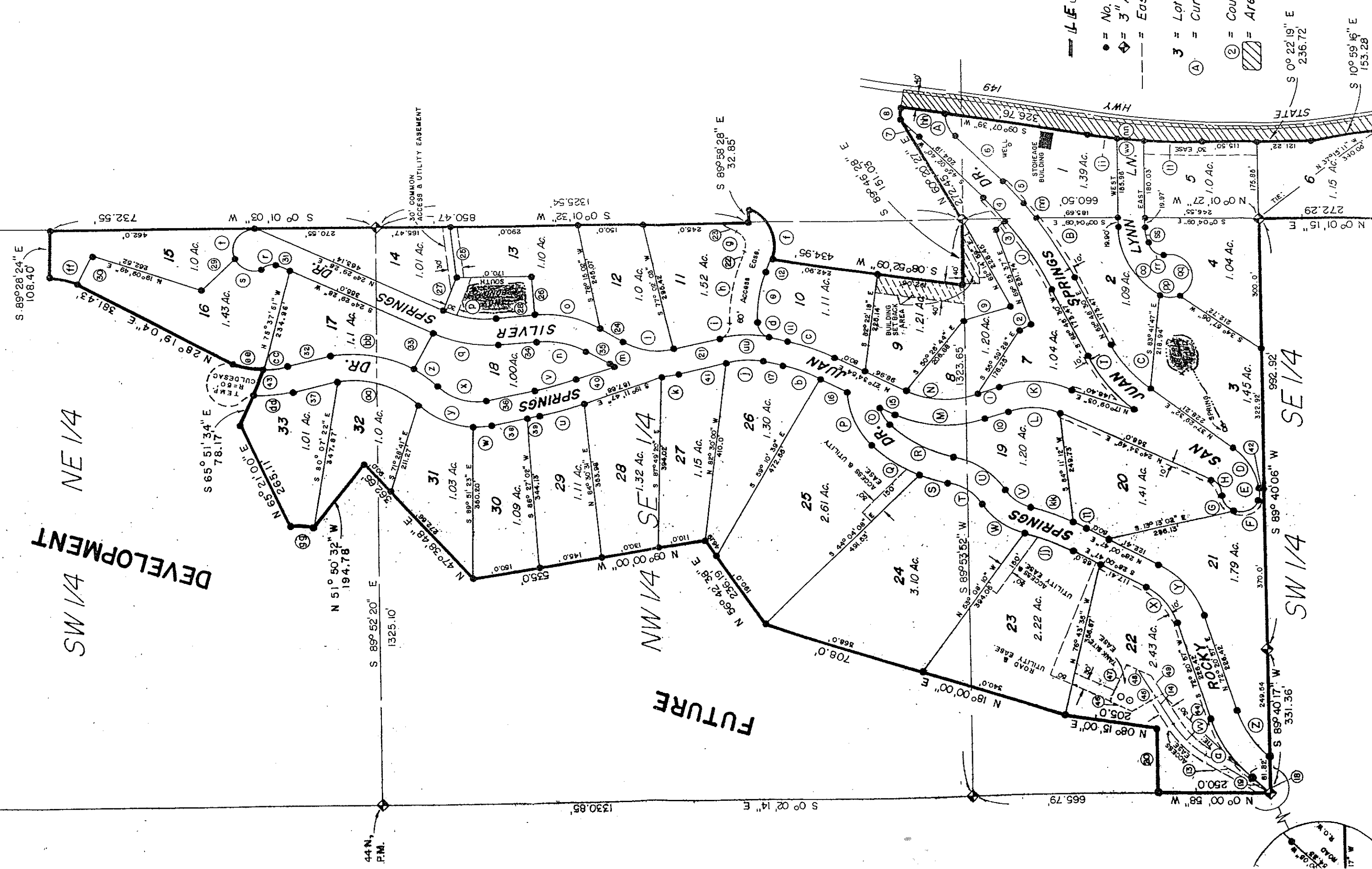


SAN JUAN SPRINGS SUBDIVISION

DEVELOPMENT
SW 1/4 NE 1/4

FUTURE

- LEGEND**
- = No. 4 Rebar
 - ◊ = 3" Alum. Mo.
 - = Easement L
 - 3 = Lot Number
 - Ⓐ = Curve Ident.
 - ⓪ = Course Ider
 - ▨ = Area Dedic.



STATE HWY 149
S 0° 22' 19" E 236.72'
S 10° 59' 16" E 153.28'